

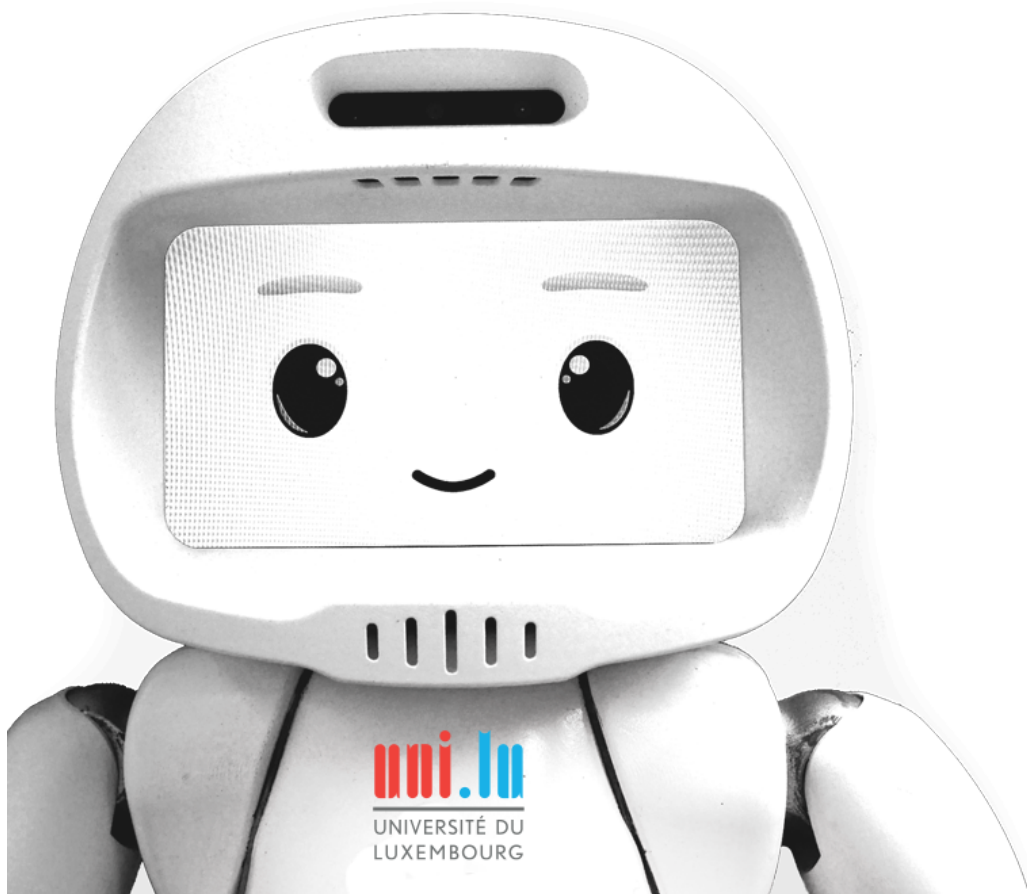
LuxLogAI

Luxembourg Logic for AI Summit

Belval Campus, Luxembourg
September 17-26, 2018



Conference Booklet

Venue information • Wifi • Room plans • Program overview • Proceedings



Instructions for Participants

General Information

- For general enquiries or projector/computer/internet problems please contact the LuxLogAI helpers (orange t-shirts) or see the registration desk.
- University security: +352 466 644 5555
- Emergency services:
 -  Police: 113
 -  Fire and Rescue Service: 112

Internet access. There are two options:

- There is **eduroam** available throughout the whole conference venue
- Alternatively, you may use our conference network:
SSID: luxlogai2018 Password: luxlogai2018@UL2018



Wifi

Instructions for Speakers

- The lecture halls (*Auditoirs*) come with digital projectors, the seminar rooms (*Salle de cours*) are equipped with a 84" display for presentations.
- Speakers in lecture halls may use the available tablet computer or bring their own laptop. Speakers in seminar rooms may bring their own laptops or they may use the laptops as provided by the session chairs (please check with them).
- Please introduce yourself to the session chair in the break before your session. Here, you should also either (i) transfer your slides to the presentation computer (e.g., via USB stick) or (ii) test your laptop computer using the connection cables provided.
- In case of problems please contact one of the LuxLogAI helpers (orange t-shirts) or see the reception desk.

Instructions for Session Chairs

- Please arrive 5-10 minutes before the session starts for checking that the equipment works.
- Please stick to the schedule.
- Please moderate questions. In the lecture halls, there are two additional hand microphones available in addition to the headset microphone for the speaker.

Instructions for Poster Presenters

- There will be two joint poster sessions on Friday, September 21, during the coffee breaks.
- You may set up your poster as soon as you arrive. This way, other participants can already see the posters even before the poster sessions.
- Please contact the registration desk for poster set up. They will provide all further information.

Online Proceedings

Conference Proceedings are available at <http://luxlogai.uni.lu/proceedings>.



As a general rule of thumb, please contact the registration desk if you have any questions, encounter a problem or if you have any special request.

LuxLogAI At a Glance

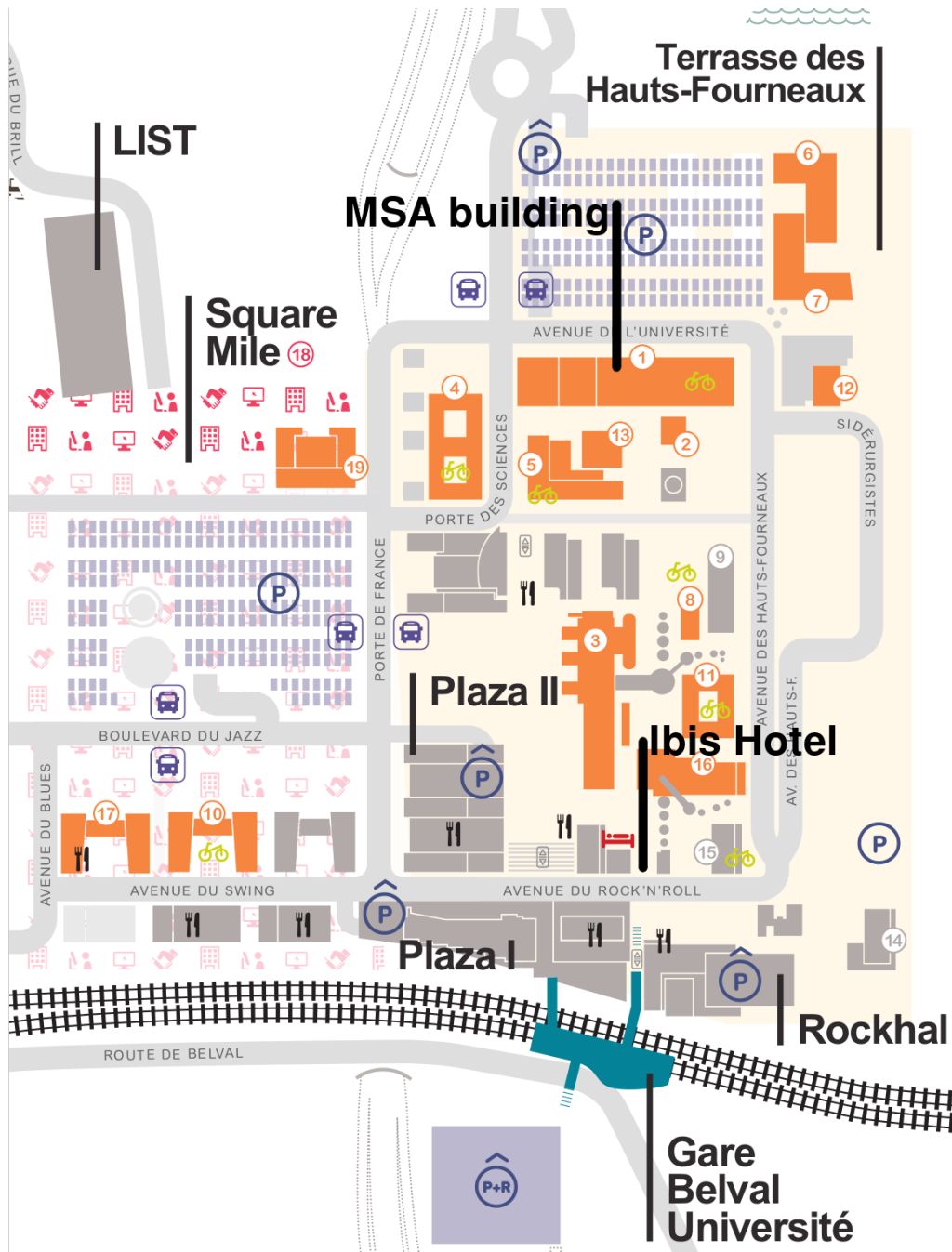
Mo 17	Tue 18	Wed 19	Thu 20	Fri 19	Sat 20 - Wed 26
	GCAI <i>MSA 4.530</i>				RW Summer School <i>MSA 4.530</i>
		RuleML+RR <i>MSA 3.520</i>			
	DecisionCAMP <i>MSA 3.110</i>				
MIREL <i>MSA 3.120</i>		SOS/ABS <i>MSA 3.120</i>	SST ABCDE <i>MSA 3.120</i>	Deduktionstreffen <i>MSA 3.120</i>	
AI and Art <i>MSA 3.170</i>			Diversity <i>MSH Black Box</i>		
		AI and Art <i>MSA 3.180</i>			
LuxLogAI Reception	Conference dinner	AI Truth or Dare			

Legend

Conference	Workshop	School/Tutorial
Social event	Art exhibition	

Venue Overview

The main venue of LuxLogAI is the *Maison du Savoir* (MSA), see ① below.



Important places:

- ① MSA building (main conference venue)
- ② University Restaurant
- ④ MSH bulding (black box)

Venue address: Maison du Savoir, 2 avenue de l'Université, L-4365 Esch-sur-Alzette

Some Highlighted Events

Reception (Monday, Sep 17)

Welcome Reception. The organizers of LuxLogAI invite you to join the welcome reception of LuxLogAI on Monday evening, Sep 17. There will be a selection of cold drinks and canapé, and Jazz live music. Every participant of LuxLogAI is welcome to attend the reception, regardless of what specific event of LuxLogAI you registered for. We would be glad to see you there!

Date/Time: Monday, September 17, starting at 18:00

Location: 1st floor of MSA building, cafeteria area

River Boat Cruise (Tuesday, Sep 18)

Conference Dinner. The conference banquet of LuxLogAI will take place on 18 Sep on a boat on the Moselle river during a cruise in the evening. The boat will leave from Remich, the pearl of the Moselle, and take us in the direction of Schengen in the tri-border area of France – Germany – Luxembourg, where the so-called Schengen Agreement was signed on a passenger vessel on 14th June 1985. See <https://luxlogai.uni.lu/river-cruise-conference-banquet/> for some photos.

Date/Time: Tuesday, September 18, Boat departure at 19:00

Bus Departure: The bus will leave at 18:00, departure spot near MSA building

AI: Truth or Dare (Wednesday, Sep 19)

Public round table discussion focused on Responsible AI and the European future.

The purpose of the discussion is to identify key directions in the development of Artificial Intelligence to gain competitive advantage for Europe and Luxembourg in particular, and to figure out the critical transformations in our society as a consequence of the technological progress. **Registration is free but mandatory.** See <https://luxlogai.uni.lu/welcome-to-luxlogai/ai-public-event/> for details on the program, the list of speakers and registration.

Date/Time: Wednesday, September 19, starting at 18:00

Bus Departure: The bus will leave at 17:15, departure spot near MSA building

AI and Art (Sep 18-Sep 21)

Art Exhibition. Artificial Intelligence and Art confluences and conjunctions may not rely only on a serendipity process, but on a deeply intentional Art, Science, Technology and Society creative research system. Meta, multi and/or interdisciplinary creative processes; robot or human artistic authorship; machine learning; computer art; AI art performances; aesthetics; art market; interactivity or audience experience are some of the issues that AI+A will cover in order to provide a wide perspective of AI impact in Art and vice versa. See <https://luxlogai.uni.lu/ai-and-art/> for details. All AI and Art events, including the exhibition, are free for all LuxLogAI participants.

Date/Time: Exhibition opening on Tuesday, September 18, 15:45

Location: MSA building, rooms 3.170/3.180 (3rd floor)

Restaurants and Coffee Shops

(near the LuxLogAI venue)

Lunch is included for all days you registered for, it will be served at MSA 3.160 (Lunch room), see room overview on the back side of this booklet. Alternatively, there are several restaurants/coffee places near the LuxLogAI venue:

- Bakes (*Bread, cakes, pastries, salads, sandwiches, coffee, etc.*), Belval Plaza I.
- Fred's (*Ice cream*), Belval Plaza I.
- Hugo's Café (*Sandwiches, snacks, bar*), Belval Plaza I.
- Coppers (*Burgers, Salads, Wraps, Cocktails*), 1, Avenue du Swing.
- Upton Park (*Meat, fish, XL burgers, all-you-can-eat buffet*), Belval Plaza I.
- Urban (*Burgers, fajitas, salads and other international flavours*), Belval Plaza I.
- Athéna Café (*Breakfast and snacks*), Belval Plaza II.
- Buffalo Grill (*American-style meat and burger restaurant*), Belval Plaza II.
- Origami (*Asian and world cuisine*), Belval Plaza II.
- Class'Croute (*Sandwiches, pasta, salads, hot dishes*), Terrasse des Hauts-Fourneaux.
- Jay Nepal (*Nepalese cuisine*), 4 Rue John Lenno.
- Dimmi Si (*Traditional Italian cuisine*), Terrasse des Hauts-Fourneaux.
- Rockhal Café (*Bar, restaurant, music*), Rockhal.
- Golden Bean (*Hot or cold drinks, cake, sandwiches, cookies*), Place de la Academie.
- Bagelstein (*Bagels, Pâtisserie, Hot or cold drinks*), 1, Avenue du Swing.
- Kebap Nabab (*Kebap, Sandwichs, Wrap, Salads*), 1, Avenue du Swing.
- Coyote Café (*Mexican Food, Burgers, Salads*), Avenue du Swing 10-12.

ATMs:

- ING Luxembourg, <https://goo.gl/maps/aRxmgBZvgjT2>
- Banque Internationale à Luxembourg (BIL), <https://goo.gl/maps/AWdECwX1V1k>

Public transportation (CFL):

Belval is well connected to Luxembourg city center via railway line 60. The regional trains run approx. every 10-20 minutes during the day, a single ticket costs 2 EUR and a ticket for a whole day costs 4 EUR. The closest train station is *Belval Université* which is approx. 8-10min. on foot from the conference venue. See <http://www.cfl.lu/espaces/voyageurs/en/gares-et-services/nos-gares/belval-universit%C3%A9> for details.

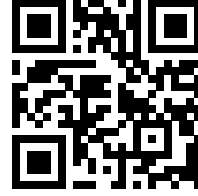
Link Summary

LuxLogAI Summit



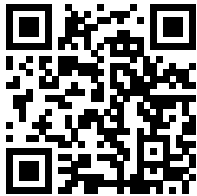
luxlogai.uni.lu

University of Luxembourg



www.en.uni.lu

Proceedings



luxlogai.uni.lu/proceedings

This booklet



luxlogai.uni.lu/info

Conference banquet



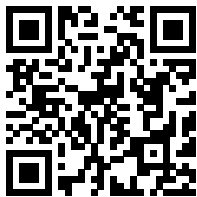
<https://goo.gl/3466Kt>

AI: Truth or Dare



<https://goo.gl/nNY9DD>

Google Maps venue overview



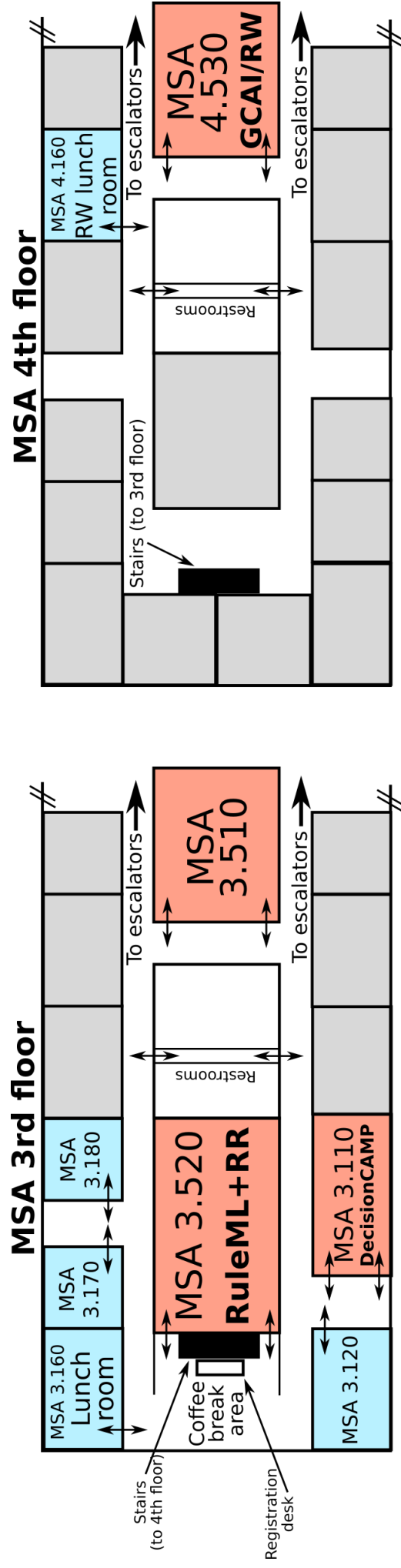
<https://goo.gl/maps/XyUDK8z9eXF2>

Public transport (CFL)



cfl.lu/en

LuxLogAI Room Overview



Supported by



Fonds National de la
Recherche Luxembourg